



*Novice Fiddle Class 3*

*October 3, 2018*

# Review

## 1. Correct hold

- Fiddle - neck between thumb & side of index finger
- Bow - right angle to strings
  - between bridge & finger board
  - Don't "change lanes"

## 2. Left Hand

- Finger Position/Intonation - Always a work in progress
- High or Low second finger?

## 3. Right Hand

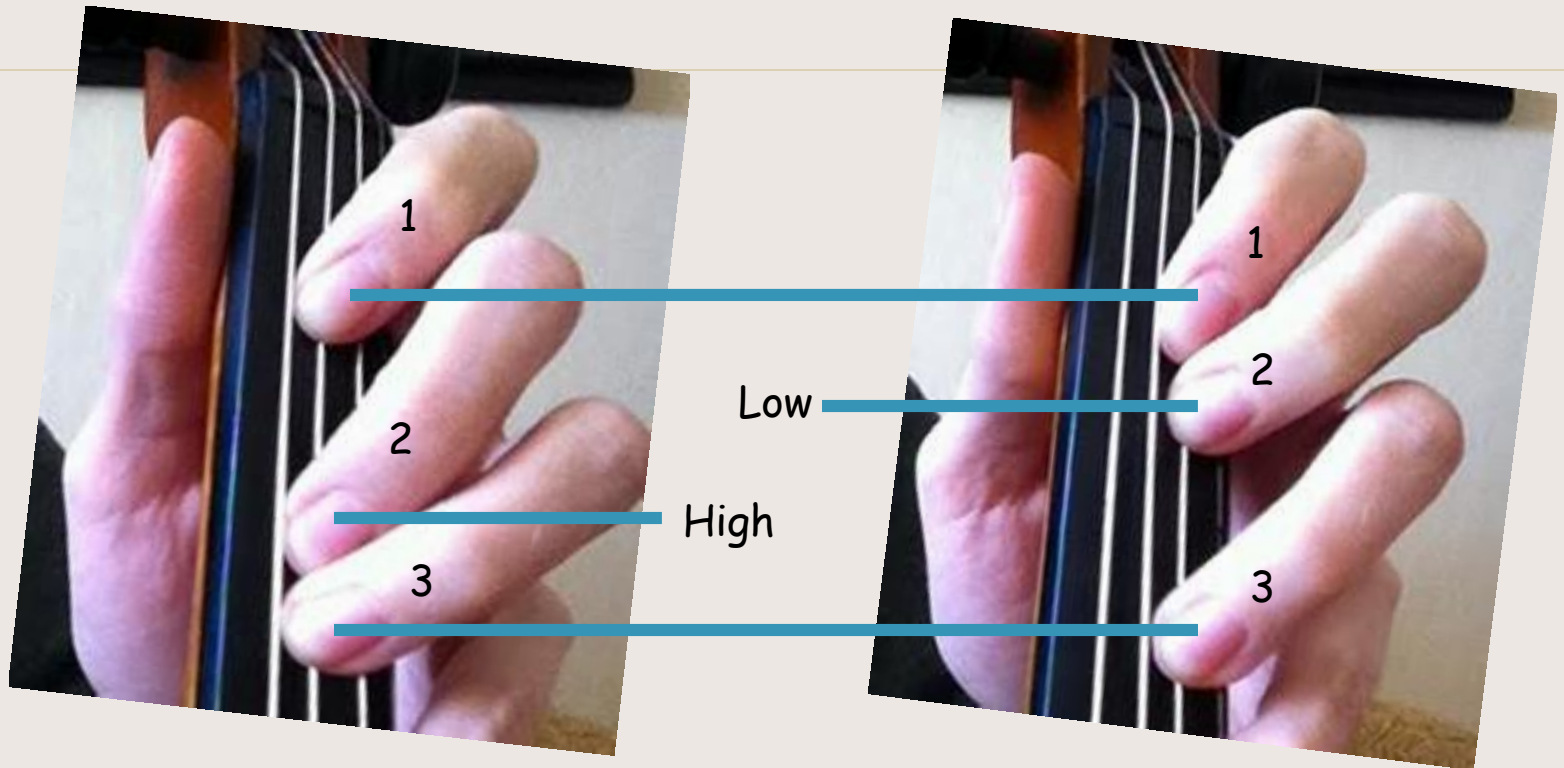
- Finger grip on bow
- Keep wrist flexible

## 4. Stay Loose

- Take breaks
- Loosen up



# 2 High & 2 Low Second Finger Position



Will Depend on Key & String

# Goals for tonight

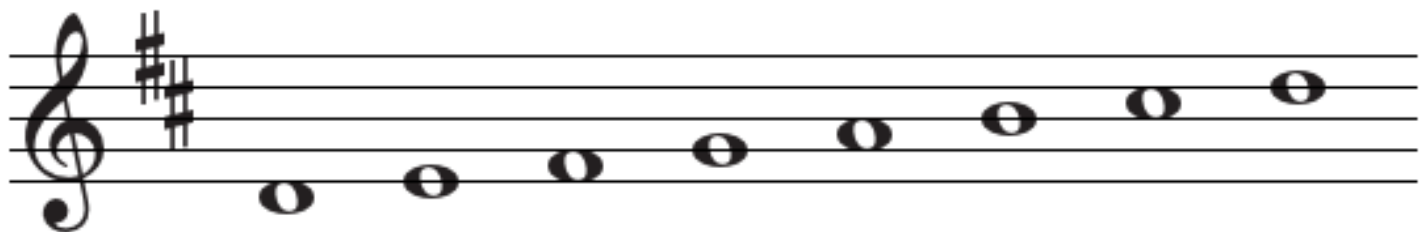
1. Warm up scales: A & D major, "Twinkle"
2. Solos: Play a tune of your choice
3. G major scale - play 2 full octaves!
4. New fiddle tune - "Bile' Em' Cabbage Down"
5. Reading music - Time signatures & Musical notes
6. Homework - "Golden Slippers"

# Scales You Can Play

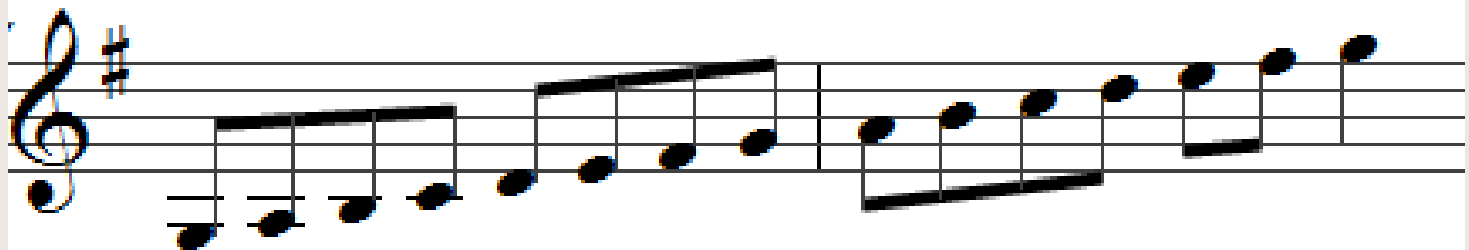
## A Major Scale



## D major scale

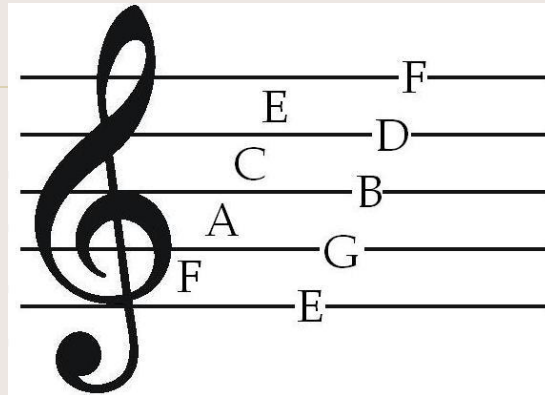


## G major scale (2 octave)





# More on Music Notation



Cleft Signature



Key Signature

Time Signature





# More on Music Notation

Count: 1 2 3 4 1 2 3 4

Quarter Note

Half Note

Whole Note

Whole Note 	4 Counts
Half Note 	2 Counts
Quarter Note 	1 Count
Eighth Note 	$\frac{1}{2}$ Count

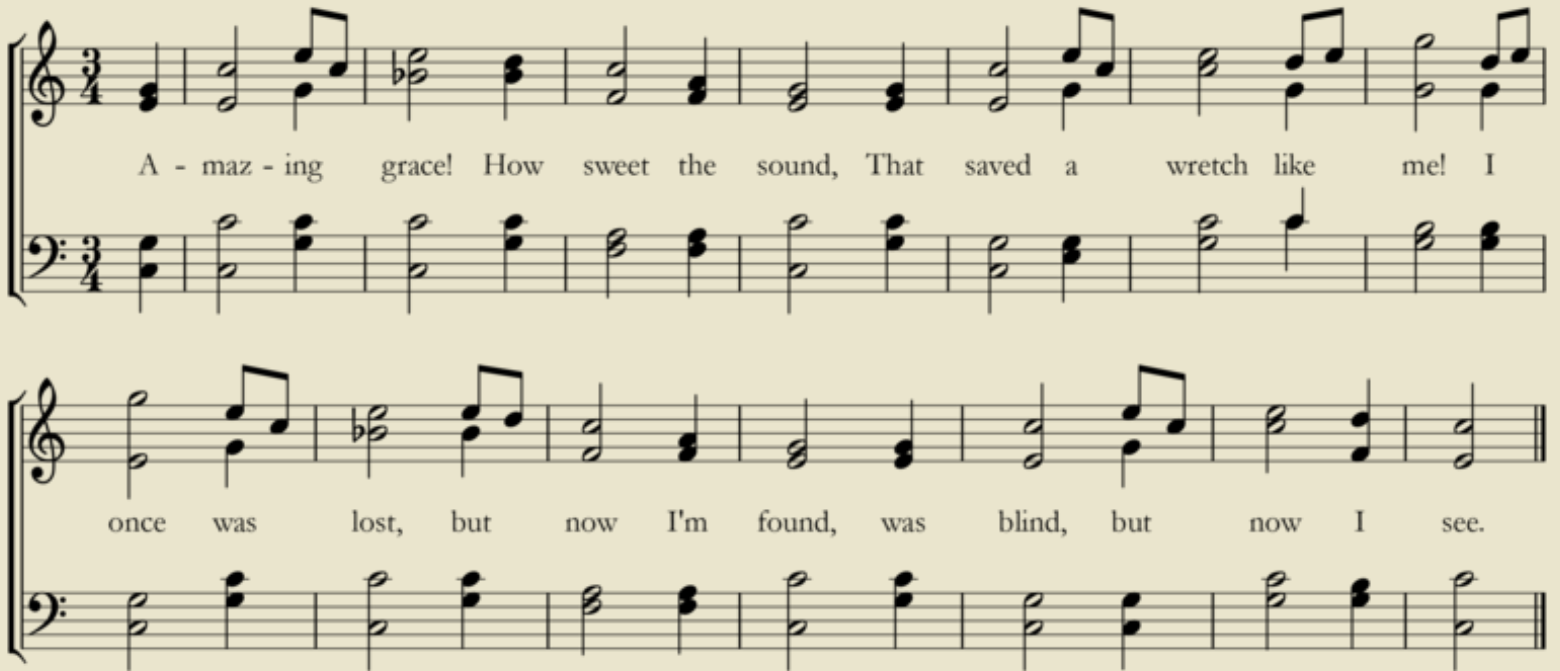


# Is this music too confusing?

What key is it in?  
How many beats per measure?  
What kind of note gets a full beat?  
What notes will play the melody?

## AMAZING GRACE

John Newton, 1779



A - maz - ing grace! How sweet the sound, That saved a wretch like me! I  
once was lost, but now I'm found, was blind, but now I see.

# Golden Slippers

The A part

D F# F# F# D F# F# F# D F# F# G F# F# E E C#

3 1 1 1 3 1 1 1 3 1 1 2L 1 1 0 0 2H

E E E C# E E E C# E G F# E D A

0 0 0 2H 0 0 0 2H 0 2L 1 0 3 0

The image shows two staves of musical notation for the A part of the song 'Golden Slippers'. The first staff contains the notes D, F#, F#, F#, D, F#, F#, F#, D, F#, F#, G, F#, F#, E, E, C#. Below the staff is a red tablature: 3 1 1 1 3 1 1 1 3 1 1 2L 1 1 0 0 2H. The second staff contains the notes E, E, E, C#, E, E, E, C#, E, G, F#, E, D, A. Below the staff is a red tablature: 0 0 0 2H 0 0 0 2H 0 2L 1 0 3 0. The key signature is one sharp (F#).

Tip - when learning a new tune make sure your comfortable playing the scale in the same key of the tune.

# Golden Slippers

The B part

A musical staff showing two notes: A (open string, fret 0) and D (first fret, fret 3). The notes are on a treble clef staff with a key signature of one sharp (F#).

Learn this Part first.  
The melody Is more Familiar.

F# E D C# B E G F# E D C# C# C# D E E E A

1 0 3 2H 1 0 2L 1 0 3 2H 2H 2H 3 0 0 0 0

D D D E F# A | E<sup>2</sup> E E G F# G F# E D

3 3 3 0 1 0 0 0 0 2L 1 2L 1 0 3

↑  
1<sup>st</sup> time  
Play to here  
Go back to beginning

↑  
2<sup>nd</sup> time  
Skip 1.  
Play to here



stay loose