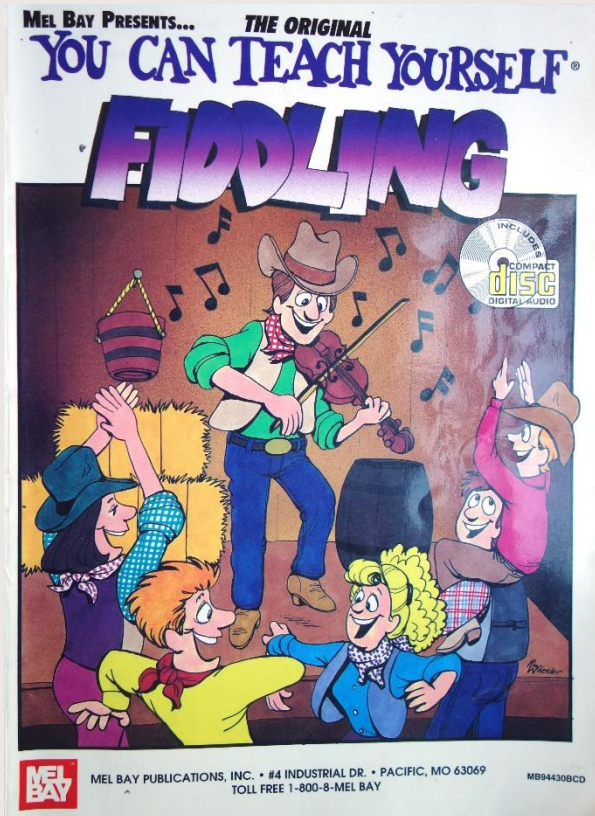




Novice Fiddle Class 2
September 26, 2018

A Word about other references



The A Scale

Sharps raise the pitch by a half step, and flats lower the pitch by a half step. Naturals are notes that are neither sharps nor flats. The number of sharps or flats determines the key and the finger positions.

When three sharps are found at the beginning of the staff, the music is in the key of A. The sharps are F \sharp , C \sharp , and G \sharp . In this key the fingers are placed on the A and E strings like this diagram:

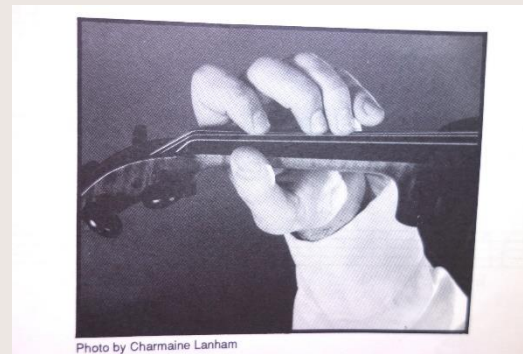
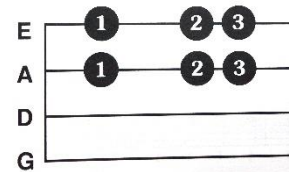
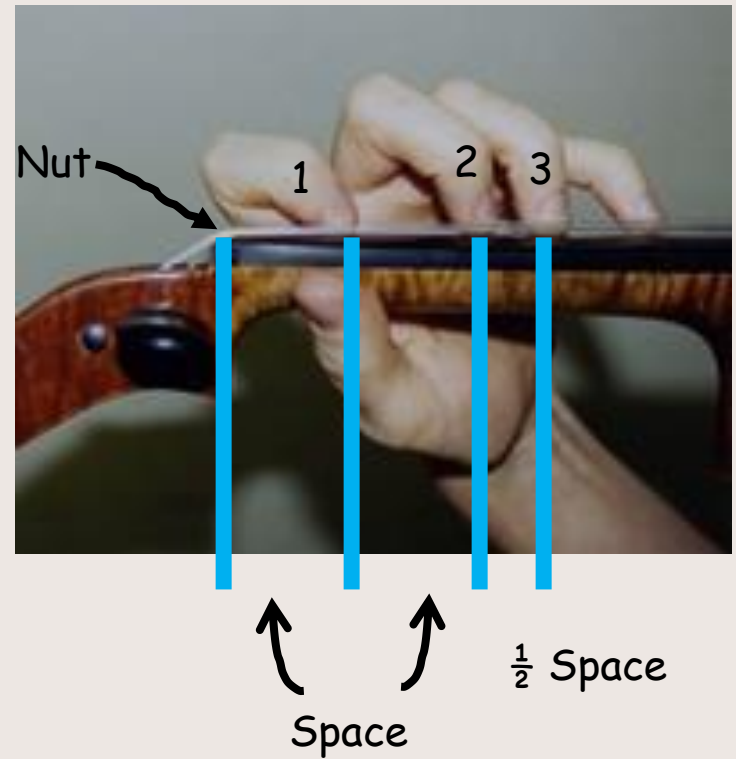
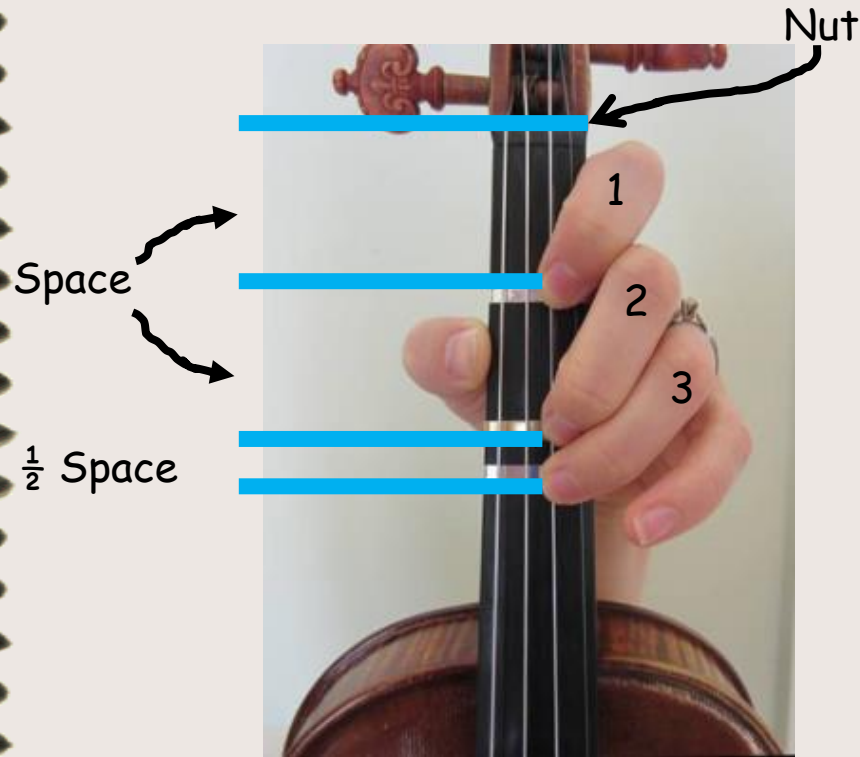


Photo by Charmaine Lanham

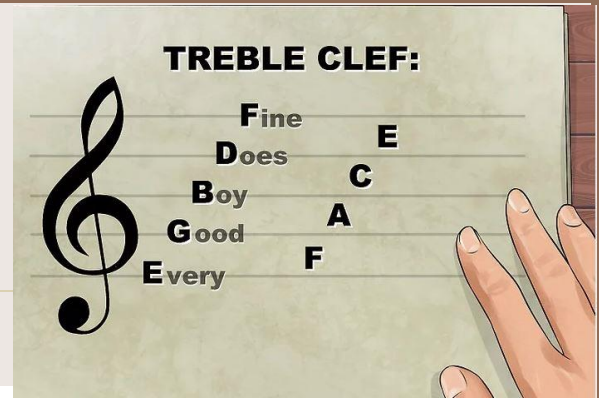
Goals for tonight

1. A major scale - Group & Solo
2. "Lisa Jane"
3. Learn the D major scale
4. "Angeline the Baker"
5. A little music theory - Scales & Key Signatures
6. Simple bowing patterns

Finger Position for A major Scale



Use the A major scale to get started reading music!

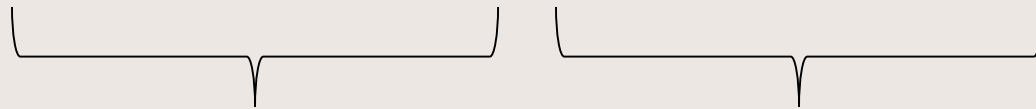


A Major Scale



Do Re Me Fa So La Ti Do
A B C# D E F# G# A

Open 1 2 3 Open 1 2 3



A string

E string

Finger Positions for the A major Scale

	G	D	Open A	Open E
A		E	1 B	1 F#
Bb		F	C	G
B		F#	2 C#	2 G#
C		G	3 D	3 A
C#		G#		



Liza Jane is in the key of A major

Liza Jane

The image shows a musical score for the song "Liza Jane" in A major, 4/4 time. The score consists of four staves of music. The first staff begins with a key signature of two sharps (F# and C#) circled in red, with a red dashed arrow pointing from the text above. The music is written in treble clef. The first staff includes guitar chords (A, V, A, V) and fingerings (2, A, 1, A, 2, A, 1, A, 2, E, 2, E). The second staff continues the melody with fingerings (2, A, 1, A, 2, A, 1, A, 2, 2, 1, A). The third staff features a triplet of eighth notes (3, E, 1, E, 2, E, 2, E) and fingerings (2, E, 2, A). The fourth staff concludes the piece with a triplet (3, E, 1, E, 2, 2, 1, A).

Finger Positions for the D major Scale

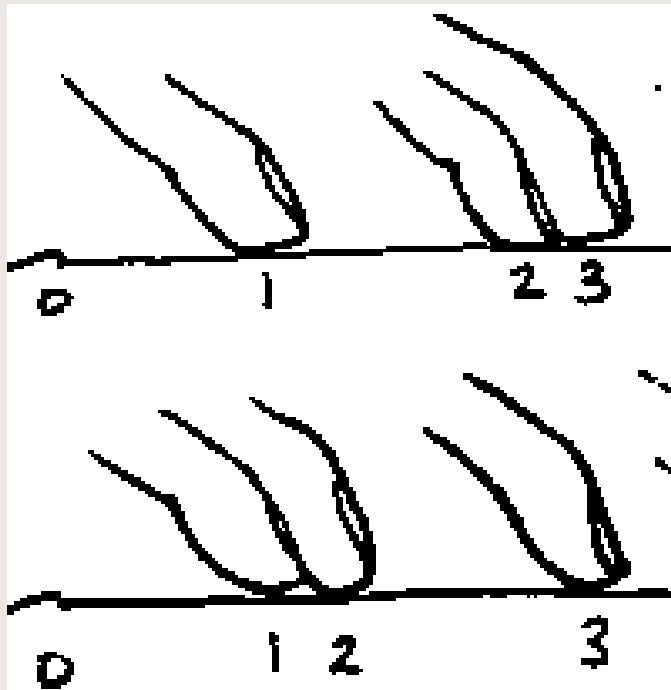
	G	Open D	Open A	Open E
A		1 E	1 B	1 F#
Bb		F	C	2 G
B		2 F#	2 C#	G#
C		3 G	3 D	3 A



Note change in position of second finger on E string.

Challenge for developing your Finger Dexterity

Position of second finger can change.



2 high position

2 low position

Varies depends on Key and string.

Angeline the Baker

Key of D major

Angeline the Baker

simple version

A 1 3 A 1 3 3 A 1 3 A 1 1

A 1 3 E 1 E 3 E 1 E 3 1 A

3 1 E 3 1 E 3 1 3 1 E 3 1

3 1 E 3 1 E 3 E 1 E 3 1 A

A Little Music Theory

Scales

Do - Re - Me - Fa - So - La - Ti - Do

1 2 3 4 5 6 7 8

tone - tone - $\frac{1}{2}$ tone - tone - tone - tone - $\frac{1}{2}$ tone

A scale is built on a repetitive tonal pattern
Regardless of the Key

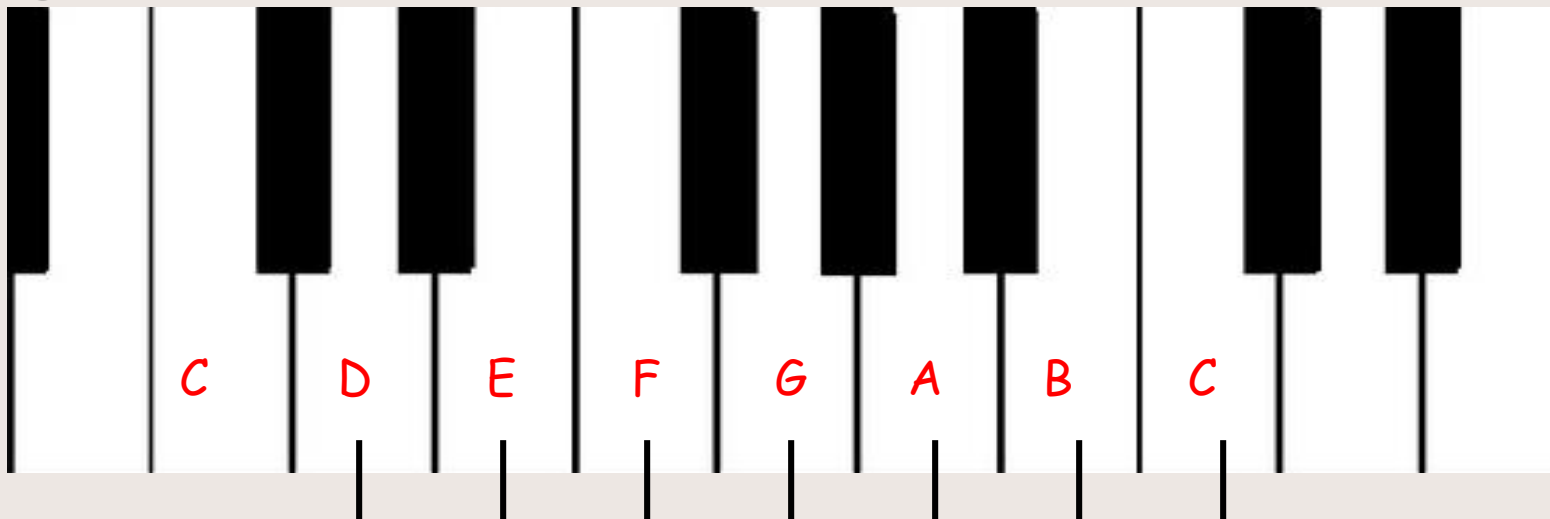
A Little Music Theory

Scales

A piano keyboard helps to see how this works



Let's look at the key of **C major**



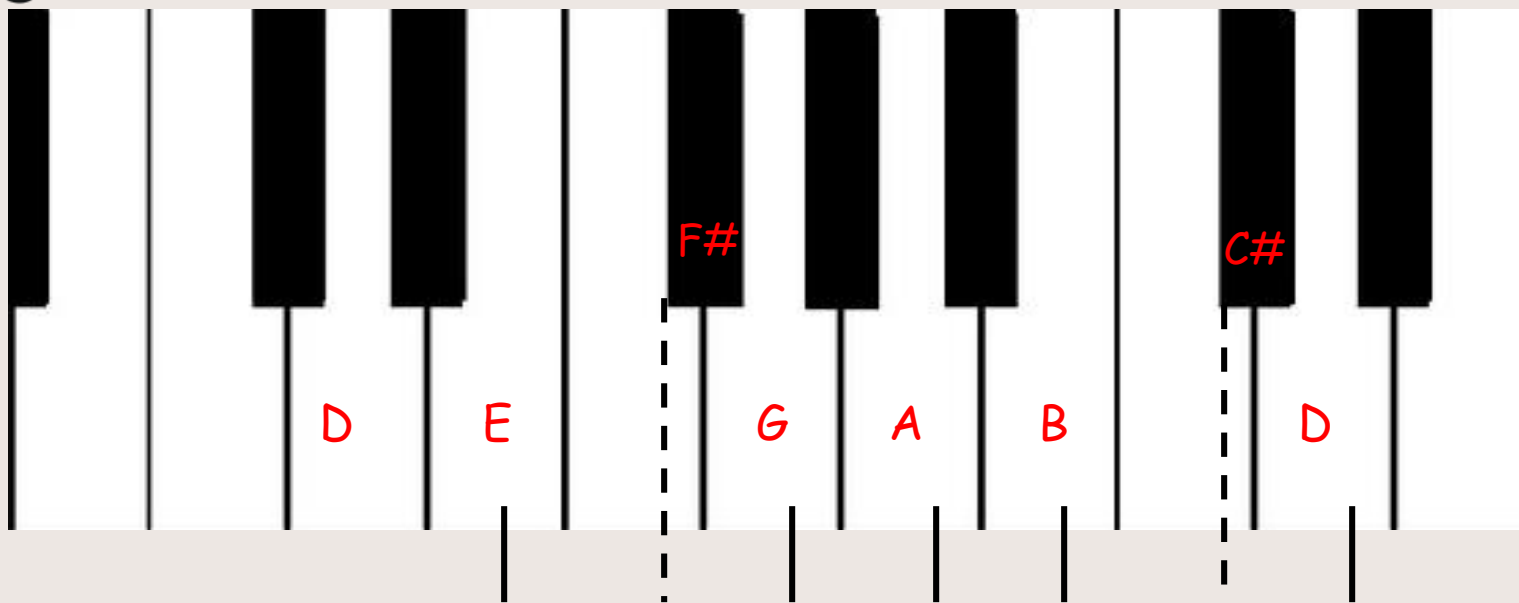
tone - tone - $\frac{1}{2}$ tone - tone - tone - tone - $\frac{1}{2}$ tone

A Little Music Theory

Scales



Now lets look at the key of **D major**



tone - tone - $\frac{1}{2}$ tone - tone - tone - tone - $\frac{1}{2}$ tone

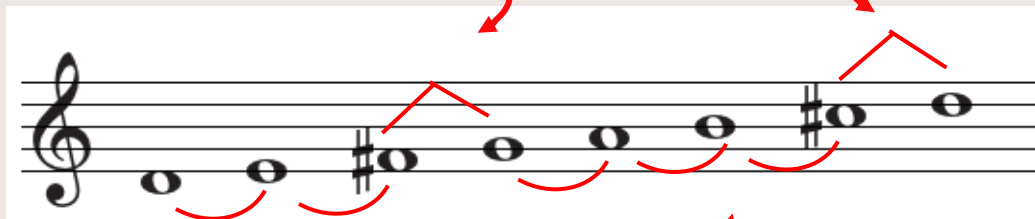
A Little Music Theory

Scales

tone - tone - $\frac{1}{2}$ tone - tone - tone - tone - $\frac{1}{2}$ tone

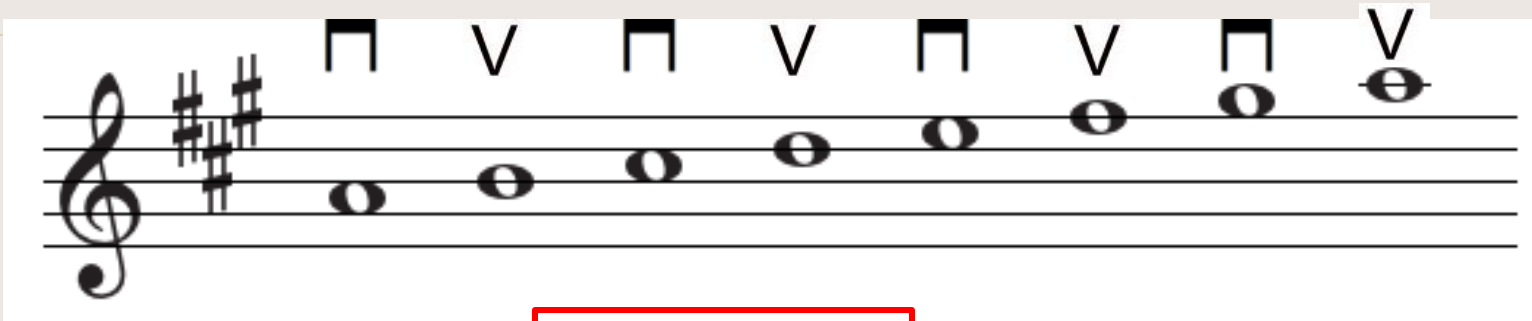


Half tone separation of these notes



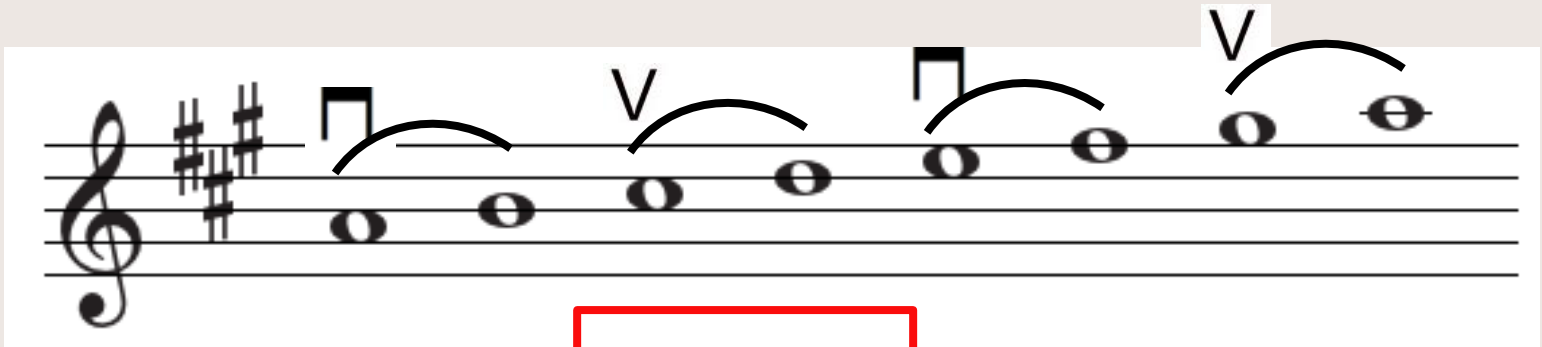
Full tone separation of these notes

Simple Bowing Patterns



v = up bow

▣ = down bow



⤿ Slur