



Novice Fiddle Class 4

October 10, 2018

Goals for tonight

1. Let's just play!
 - Bile' em' Cabbages
 - Liza Jane
 - Angeline the Baker
 - Golden Slippers
 - Red Wing
2. ...then we'll look at the music.

Bile' em' Cabbages Down *

D major

2 2 2 2 3 3 2 2 2 2 1

2 2 2 2 3 3 3 3 2 2 1 1 0

* played on 1 string - open, 1st , 2^H and 3rd fingers.

Liza Jane *

A major

2 A 1 A 2 A 1 A 2 E 2 E

E A

2 A 1 A 2 A 1 A 2 2 1 A

3 E 1 E 2 E 2 E A

3 E 1 E 2 2 1 A

* played mostly with open strings, 1st and 2^H fingers.

Angeline the Baker *

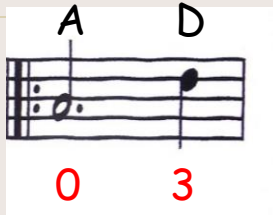
D major

The image displays four staves of musical notation for the piece 'Angeline the Baker' in D major. The notation is written in treble clef with a key signature of two sharps (F# and C#). The first staff begins with a treble clef, a key signature of two sharps, and a common time signature. The notes are quarter notes, and the fingerings are indicated by numbers 1 and 3. The second and third staves continue the melody with similar note values and fingerings. The fourth staff concludes the piece with a final note and a double bar line. The notes and fingerings across the staves are: Staff 1: A (1), 3, A (1), 3, 3, A (1), 3, A (1), 1; Staff 2: A (1), 3, E (1), E (3), 1, E (3), E (1), E (3), 1, A; Staff 3: 3, 1, E (3), 1, E (3), 1, 3, 1, E (3), 1; Staff 4: 3, 1, E (3), 1, E (3), E (1), E (3), 1, A.

* played with open strings, 1st and 3rd fingers.

Golden Slippers

D major



F# E D C# B E G F# E D C# C# C# D E E E A

1 0 3 2H 1 0 2L 1 0 3 2H 2H 2H 3 0 0 0 0

D D D E F# A | E² E E G F# G F# E D

3 3 3 0 1 0 0 0 0 2L 1 2L 1 0 3

↑
1st time
Play to here
Go back to beginning

↑
2nd time
Skip 1.
Play to here

Redwing

G major

A part

The A part of the Redwing song is written in G major (one sharp) and 4/4 time. It consists of four staves of music. The first staff begins with a treble clef, a key signature of one sharp (F#), and a 4/4 time signature. The melody starts on G4, moves to A4, then B4, and continues with a series of eighth and quarter notes. The second staff continues the melody with eighth notes and quarter notes, including a descending eighth-note pair. The third staff features a dotted half note on G4, followed by a quarter note on A4, and then a series of quarter notes. The fourth staff concludes the A part with a double bar line, featuring a descending eighth-note pair and a final quarter note on G4.

B part

The B part of the Redwing song is written in G major (one sharp) and 4/4 time. It consists of four staves of music. The first staff begins with a treble clef, a key signature of one sharp (F#), and a 4/4 time signature. The melody starts on G4, moves to A4, then B4, and continues with a series of quarter notes. The second staff continues the melody with quarter notes and a half note, including a slur over the first two notes. The third staff features a quarter note on G4, a quarter note on A4, a quarter note on B4 with a sharp sign, and then a series of quarter notes. The fourth staff concludes the B part with a double bar line, featuring a half note on G4 and a quarter rest.

Life After Beginner Fiddle Class

Old Fiddler's Club of Rhode Island (OFCRI)

- Oldest Fiddle Club in U.S.
- Established 1929
- Performance Oriented
- Summer & Fall
- Country Fairs & Local Events



Life After Beginner Fiddle Class

Quiet Corner Fiddlers (QCF)

- Meet weekly (Tuesdays) year round
- Practice sessions in members homes
- Performance Oriented
- Restaurants and Farmer's Markets





Life After Beginner Fiddle Class

Monday Slow Jam (MSJ)

- Meet Weekly (Monday)
- Rich's (Putnam) or Missy's (Pomfret)
- New fiddler's welcome
- Other instrument friendly
- Play for enjoyment