

Girl I Left Behind

Musical score for "Girl I Left Behind" in G major, 2/4 time. The score consists of three staves of music. The first staff contains measures 1-7 with chords G, C, G, C, and D7. The second staff contains measures 8-15 with chords G, D7, G, D7, G, D7, G, and C. The third staff contains measures 16-18 with chords D7 and G. The piece concludes with a double bar line.

Marching to Praetoria

Musical score for "Marching to Praetoria" in G major, 2/4 time. The score consists of three staves of music. The first staff contains measures 1-9 with chords G, D7, G, and D7. The second staff contains measures 10-19 with chords G, C, G, D7, and G. The third staff contains measures 20-21 with chords D and G. The piece concludes with a double bar line.

French Canadian Medley #1

Gaspe Reel/ Strawberries & Raspberries/Government Reel

1 D A7 D A7

9 A7 D A7 A7 D A7 D

17 D D A7

25 D D D A7

34 D D D A7 D

41 A7 D D G D7

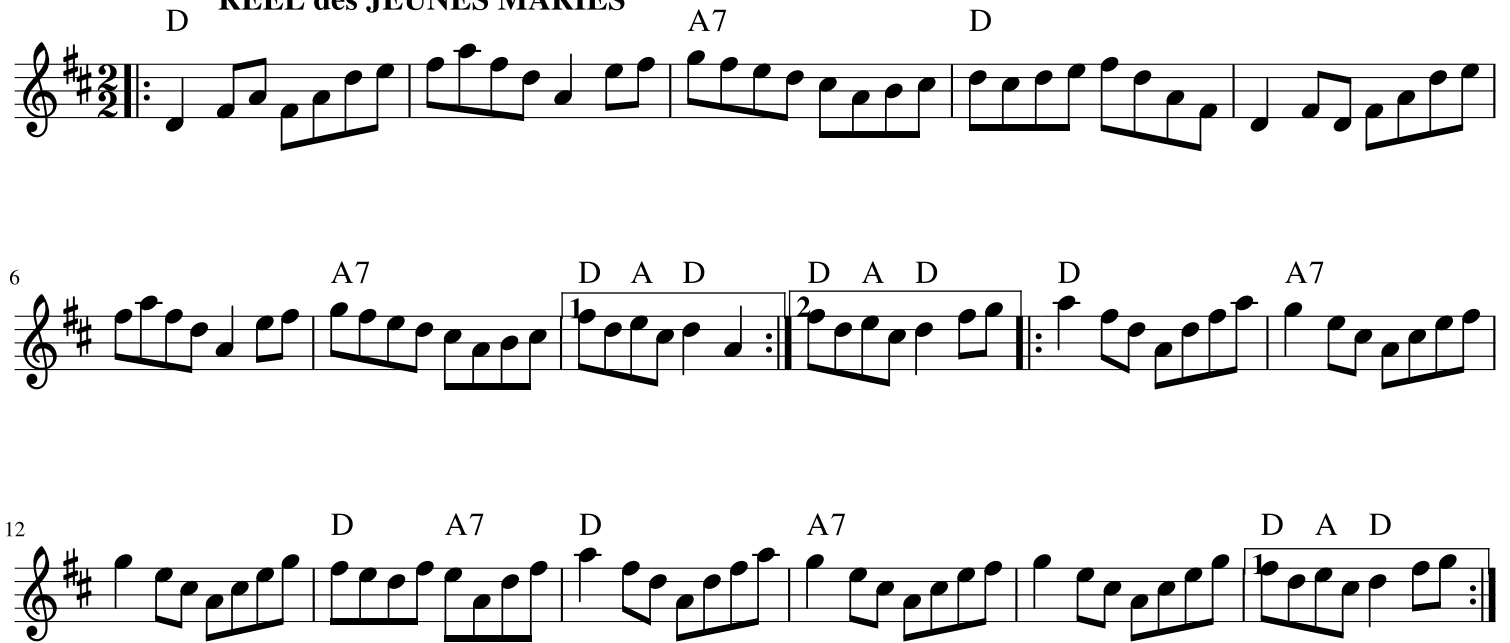
48 G D7 G G D

55 A7 D A7 D

62 D

Reel des Jeunes Maries/Pays de Haut

REEL des JEUNES MARIES



Musical notation for the first section, 'REEL des JEUNES MARIES'. It consists of three staves of music in 2/4 time, key of D major. The first staff starts with a treble clef, a key signature of two sharps (F# and C#), and a 2/4 time signature. The melody is written in a single line. Above the staff, the chords D, A7, and D are indicated. The second staff begins at measure 6 and includes first and second endings. Above the staff, the chords A7, D A D, D A D, D, and A7 are indicated. The third staff begins at measure 12 and includes a first ending. Above the staff, the chords D, A7, D, A7, and D A D are indicated.

PAYS de HAUT



Musical notation for the second section, 'PAYS de HAUT'. It consists of four staves of music in 2/4 time, key of D major. The first staff begins at measure 18 and includes a first ending. Above the staff, the chords D A D, D, A, D, and A are indicated. The second staff begins at measure 24 and includes first and second endings. Above the staff, the chords D, A, D, and D are indicated. The third staff begins at measure 29 and includes a first ending. Above the staff, the chords D, G, A, D, A, and D are indicated. The fourth staff begins at measure 34 and includes first and second endings. Above the staff, the chords G, A, D, and D are indicated.

Love Letter in the Sand/San Antonio Rose

Medley with Loggieville Two-Step

Love Letters...play twice, once in higher register if you can

D G E7 A[^] A7 D

10 G E7 A A7 D F#

20 Bm E7 A D G

San Antonio Rose...play once, increase tempo

29 E7 A7 DGD D D7 G E7 A7 D

41 D7 G E7 A7 D

52 G E7 A7 D D7 G E7 A7

63 D A E7 A

74 E7 A A7 D D7

84 G E7 A7 D D7 G E7 A7 D

Frank Moon's Rhode Island & Ellis Island Waltzes

Rhode Island Waltz

D B7 Em

9 A7 D7 A7 E7 A7

17 D7 G E7 A7 D

26 B7 E7 A7 D D

1. 2.

Ellis Island Waltz

D A7 D D A7

43 Em A7 Em A7 Em A7 D

51 D D7 G C7 E7 A7 D

60 A7 D B7 Em A7 D

The Boys of Bluehill/Jamie Allen

Medley

Play each Twice

Boys of Bluehill Hornpipe



Musical notation for the first section, 'Boys of Bluehill Hornpipe'. It consists of three staves of music in 4/4 time, key of D major. The first staff (measures 1-5) includes a repeat sign and a triplet of eighth notes. The second staff (measures 6-10) includes a first and second ending. The third staff (measures 11-15) includes another triplet of eighth notes.

Chords: D, G, A, D, A, D, G, D₃, G, A, D, A, D, G, D₃, G, A

Jamie Allen...Pick up Tempo



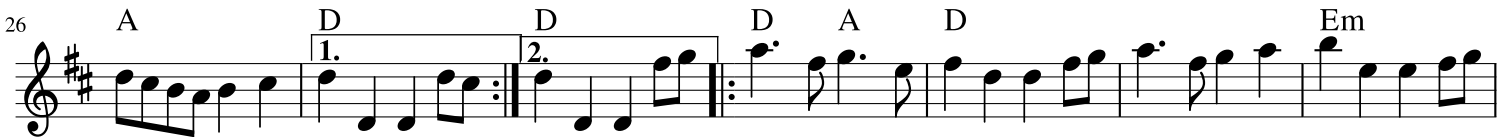
Musical notation for the second section, 'Jamie Allen...Pick up Tempo'. It consists of three staves of music in 4/4 time, key of D major. The first staff (measures 16-22) includes a first and second ending. The second staff (measures 23-30) includes a first and second ending. The third staff (measures 31-38) includes a first and second ending.

Chords: D, A, D, D, G, Am, D, G, C, G, D, G, G, G, Am, D, G, C, G, D, G, G

Flowers of Edinburgh/My Love is But a Lassie

Medley

Play each Twice



Helena Polka

Helena Polka

1. G D7 G

10 D7 G Fine D

18 A7 D A7 D A

26 D G D G

35 D G C

45 G C G C D.C.

Detailed description: The musical score is written in G major (one sharp) and 2/4 time. It consists of six staves of music. The first staff (measures 1-9) features a melody with chords G, D7, and G. The second staff (measures 10-17) continues the melody with chords D7, G, and ends with a 'Fine' and a D chord. The third staff (measures 18-25) has chords A7, D, A7, D, and A. The fourth staff (measures 26-34) starts with a first ending (marked '2.'), then has chords D, G, D, and G. The fifth staff (measures 35-44) has chords D, G, and C. The sixth staff (measures 45-52) has chords G, C, G, C, and ends with a double bar line and repeat signs, labeled 'D.C.'.

Jessie Polka

Jesuita en Chihuahua

The musical score for "Jessie Polka" is written in treble clef, G major, and common time. It consists of four staves of music. The first staff contains measures 1-6 with chords G, D, D, G, D, G, and C. The second staff starts at measure 7 and includes chords G, D7, G, A7, D, A7, D, and A7. It features a repeat sign with first and second endings. The third staff starts at measure 12 and includes chords A, D, A, D, G, and D. The fourth staff starts at measure 17 and includes chords D, G, C, G, D7, and G. The piece concludes with a double bar line.

Kesh Jig/Haste to the Wedding

Jig set

Kesh Jig

Musical notation for the Kesh Jig, measures 1 through 13. The key signature is one sharp (F#) and the time signature is 6/8. The melody is written on a single staff with treble clef. Chords are indicated above the staff: G, D7, G, D7, G, D7, G, D7, G, D7, G, D7, G, D7, G, C, G, D7. The piece features a repeat sign at the beginning and a double bar line with first and second endings at measure 13.

Haste to the Wedding

Musical notation for the Haste to the Wedding, measures 14 through 32. The key signature is one sharp (F#) and the time signature is 6/8. The melody is written on a single staff with treble clef. Chords are indicated above the staff: G, C, G, C, G, D7, G, D7, G, D, A, D, Em, A, D, A, D, A, D, D, G, D, Em, D, G, D, A, D. The piece features a repeat sign at the beginning of the section and a double bar line with first and second endings at measure 20. A fermata is placed over the final note of the second ending.

WHISKEY BEFORE BREAKFAST

Arranged by Virginia Worrell

Musical score for "Whiskey Before Breakfast" in G major, 4/4 time. The score consists of three staves of music. The first staff (measures 1-6) has chords D, G, D, A, D. The second staff (measures 7-12) has chords G, D, A, D, D, Em, A. The third staff (measures 13-18) has chords D, A, D, G, D, A, D. The piece ends with a double bar line and repeat dots.

Farewell to Whiskey

Musical score for "Farewell to Whiskey" in G major, 4/4 time. The score consists of three staves of music. The first staff (measures 1-7) has chords G, Am, Em, C, G, Am, D, G, D. The second staff (measures 8-14) has chords G, G, G, Am, D, G, C, G, C, G. The third staff (measures 15-18) has chords Am, D, G, D7, G, G. The piece ends with a double bar line and repeat dots.

Summertime Medley Part 1

In the Good Old Summertime/Daisy/Sidewalks of New York

In the Good Old Summertime

G G7 G B7 Em A7



14 D7 G G7 C G D7 G



Daisy

27 B7 Em A7 D7 G G G7 C G D7



42 G Em A7 D7 G C G



Sidewalks of New York

56 D7 G D7 G D7 G D7 G G G7 C



70 G C G E7 A7 D7 G D7 G



84 G7 C G C G E7 A7 D7 G



Summertime Medley Part 2

The Band Played On/Let Me Call You Sweetheart/After the Ball

The Band Played On

G Bm C G D7 Am7 D7 Am7 G



13

G Bm G7 C Am C



Let Me Call You Sweetheart

25 C#dim G Em A7 D7 G G C E7 A7



39

D7 G Bdim D7 G C E7



After the Ball...

53 A7 C Cdim G E7 A7 D7 G G C G



67

Gdim D7 Am Ddim Am D7 G Gdim Am7 G C



80

G E7 A7 D7 G E7 A7 D7 G

